

We are now
developing Mechrail™

Questions and answers regarding the new Mechrail™ product range

What are the main differences and similarities between the previous profiles and the new?

The new profiles have improved performance properties, lower weight per meter, and they have a new design that allows the crane system profiles to be joined and extended in a new way that makes the joint self-supporting, that is, as strong as the profile itself. The profile's nut slots on the sides have been reshaped, and end caps and end stops have a new design and fastening technique.

What are the benefits of a self-supporting joint?

An important advantage is that the configuration of the rail system becomes easier, because with the new profiles it is no longer necessary to mount a joint within 500 mm from one of the suspension points. This means that the profiles rarely need to be cut into odd lengths to match the suspension distance of the roof beams, thus minimizing cutting waste. In some cases, the number of necessary suspensions can also be reduced, which further improves the system's overall economy. In addition, it is also possible to use a joint on a traverse and extend it if a very long suspension distance is required.

What role does the design of the nut slots play?

The nut slots have been adapted to the classic 5x20 mm Movomech nuts for attachment of accessories and media supply components, but the design also fits ITEM 8 mm nuts that provide great possibilities for customization and smart options. This type of nut has the advantage that it can easily be mounted anywhere on the profile without having to be brought in from the end – a smart feature that is appreciated by installers!

Why are end caps and end stop fitted together?

The end stop is a critical security component of a rail system. It is of the utmost importance that they are mounted in all track and crane profiles. In each interaction with the system – during installation, use, and maintenance work – it is necessary to easily determine that end stops are in place. The end caps of the new profiles are designed in such a way that they cannot be mounted without end stops, that is, if there is no end stop, there is no end lock. And the end stop can be quickly detected visually.

What about suspensions and trolleys?

The new profiles' geometric interface to trolleys and suspensions is unchanged, and all types of suspensions and trolleys fit the new profiles. In addition, the range has been enriched with a few new suspension variations, that are even easier to install, and with improved adjustability.

What about the other components of the Mechrail range, do the other accessories fit the new profiles?

In general, many accessories can also be used for the new profiles, such as cable trolleys, safety wires, travel limits mounted from below, and more. The accessories mounted in the nut slots have in some cases been redesigned with a new article number. In total, there are now more universal accessories that fit multiple profile models, which simplifies the configuration. At the same time, the range of accessories has been broadened further as we have developed new standard variants of, for example, electric and pneumatic travel brakes, and more.

Can I extend an existing AHB1.1/AHB system with the new profiles AHB140/190?

Partly. The track cannot be extended with the new profile; here AHB1.1 and AHB2 will still be used. However, it works well to mount a traverse crane with AHB140/190 in an existing AHB1.1/AHB2 track.

Will Movomech still stock and sell the profiles AHB1.1 and AHB2?

Yes, we will continue to provide AHB1.1 and AHB2 with the constraint that it will be used to expand existing systems. For new systems, we will offer the new profiles as we see great benefits with these.

What is the price level of the new profiles?

The price level is approximately the same as the previous profiles. In some cases, the overall economy of a system may be lower than in systems where, for example, fewer suspensions are required.

What different profile lengths are available?

The AHB140 and AHB190 are available in fixed meters up to 8 meters. (The previous longest 7.7 meter length is replaced by 8 meters.)

When is the sales start for the AHB140 and AHB190 profiles?

The first delivery is scheduled for late 2018, with sales beginning this autumn 2018.

Are the new profiles available in the online configurator EConfig?

They will soon be available in EConfig, configured with the new design rules with regard to joint placement and profile cut lengths.

Do the other profiles remain?

Yes, the other profiles, PHB, PHB1, LHB and AHB3 are also available with their accessories. Please check our updated product catalogue for an overview of our standard range.

What is 30s, 50s and 75s?

It is the new name of our profile categories, where the number corresponds to the wheel diameter of the trolleys. For each size category there is a corresponding accessory range. The 30 series includes PHB and LHB. The 50 series includes PHB1, AHB140/190, and in the 75 series AHB3 is found, our largest profile. The range of suspensions for example, uses this designation, and a suspension type A 30s thus fit PHB / LHB, etc.

Is there anything else new in the product catalogue?

Yes, the product catalogue contains more configuration examples and is divided into two separate parts; a catalogue part with article numbers and configuration rules, and a manual section with installation instructions.

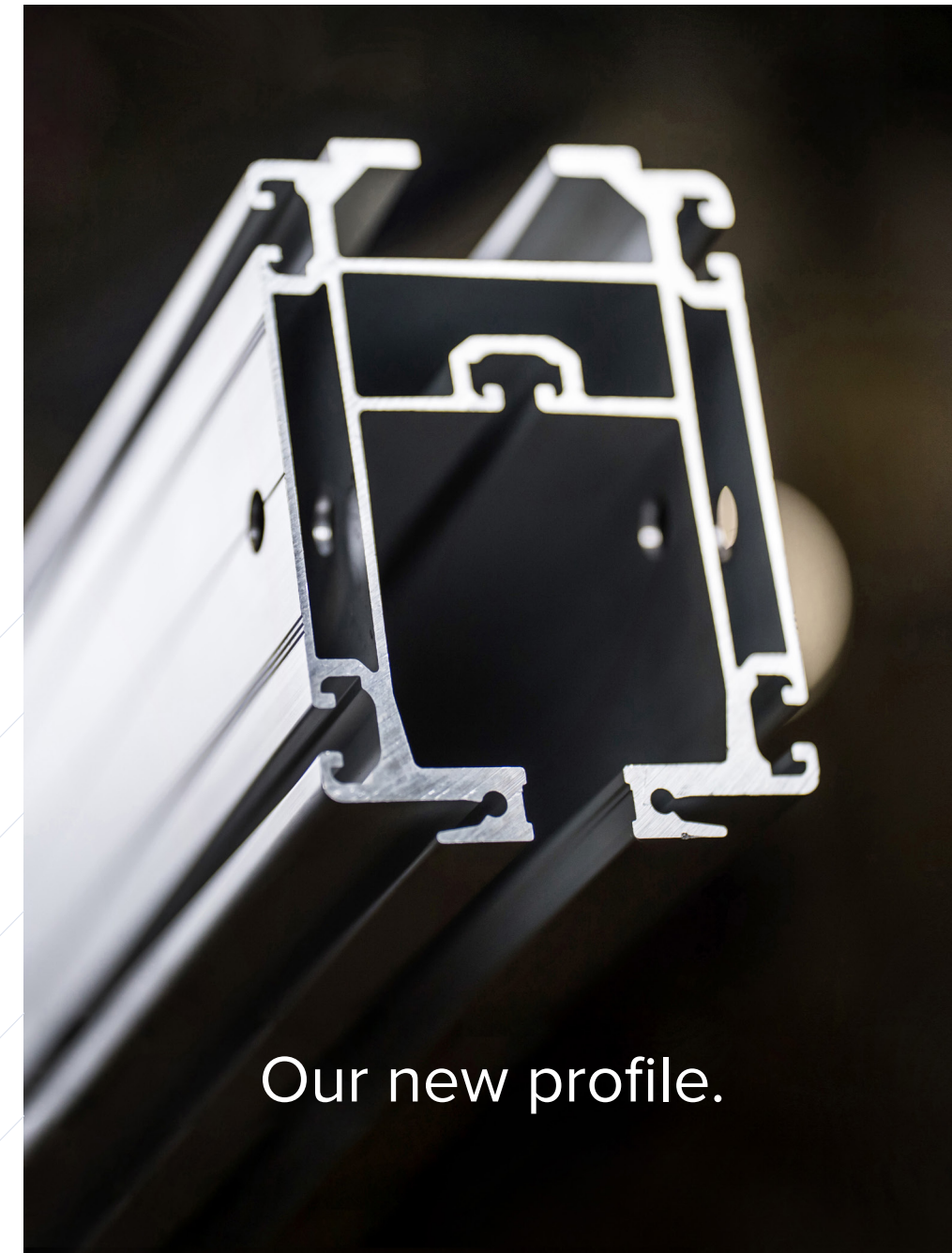
If I have more questions?

Welcome to contact our sales department and we will tell you more. We will be happy to visit and show you our new products at your premises!



Movomech AB Phone: +46 (0)44 28 29 00

www.movomech.com



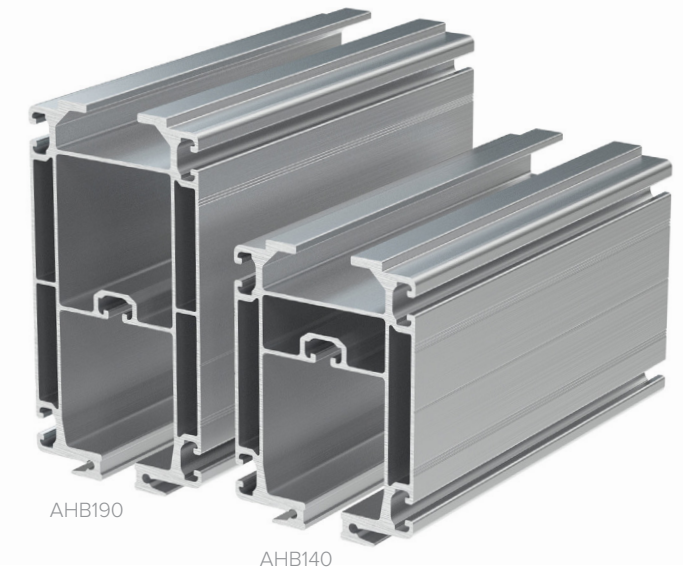
Our new profile.

MECHRAIL™

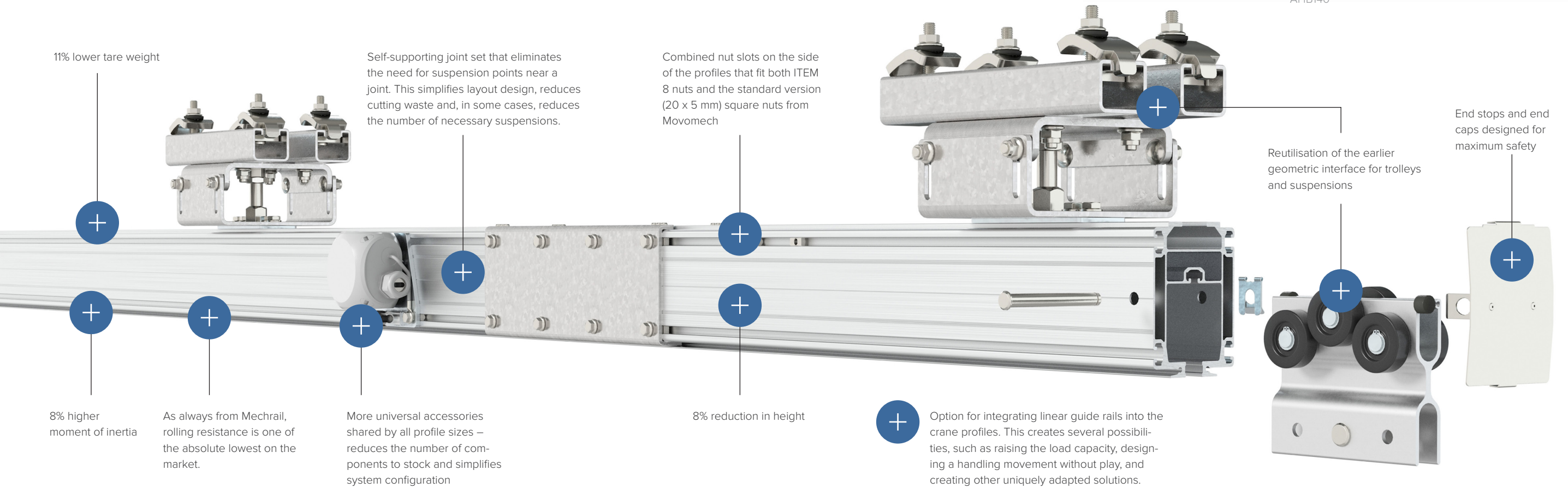
Introducing two new members of the Mechrail™ family!

Our classic light duty overhead crane system has been updated with a brand new profile series: AHB140 and AHB190, which, together with an updated range of accessories, makes the Mechrail system even smarter!

In the product series, the new profiles will replace AHB1.1 and AHB2 respectively.



New Mechrail™ has many beneficial features:



Movomech is founded in Kristianstad. The profile system Mechprofile™ is launched.

Mechrail™ aluminium light duty overhead crane system is launched – one of the first systems of its kind.

The first stepless frequency electric chain hoist, Mechchain™, is launched on the market.

The range of lifting manipulators is expanded with Mechstick™, Mechstack™, Mechspace™, Vacuhand™ och Easyhand™.

Movomech becomes part of the Amplex group under the business area Lifting technology. The business is streamlined into two companies.

Sunnex® premium machine mounts and workplace mats are included in the product offering.

Mechline Pro Crane™ with integrated balance lifter and Easycrane™ with integrated vacuum lift are launched.

1986

1990

1995

1998

2006

2010

2017

1987

1992

1996

2003

2007

2012

2018

The first industrial lifting manipulator Mechlift™ is installed at Swedoor.

Development of Mechlift™ with stepless frequency control and set of Mechrail™ profiles: AHB1, AHB2 and AHB3.

The Mechrail™ profile LHB for lighter loads is launched.

Order and installation of an assembly line for VW Poznan. The AHB1 curve profile is developed.

The Mechrail™ profiles PHB1 and PHB are launched for rapid handling with vacuum lifters.

The pneumatic balance lifter Mechline Pro™ with lifting wire is launched and quickly becomes popular.

The Mechrail™ AHB140 and AHB190 profiles are launched with a new platform of accessories.