

Mechcrane

Catalogue
2018-05-01

EN



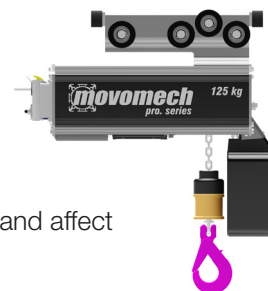
Contents

| | |
|---------------------------|----|
| Wall mounted cranes | 4 |
| LVS | 4 |
| AVS1 | 4 |
| AVS2 | 5 |
| Floor mounted cranes..... | 6 |
| LPS | 6 |
| APS1 | 7 |
| APS2 | 8 |
| Knuckle boom cranes..... | 9 |
| VKL | 9 |
| VKL-H | 10 |
| VKA 125..... | 11 |
| VKA-H 125..... | 12 |
| VKA 200..... | 13 |
| Optional products..... | 15 |
| End fix..... | 15 |
| Cable towing arms | 15 |
| Cable trolleys..... | 16 |
| Wire brackets | 17 |
| Cable & hose clamps | 17 |
| Coupling units | 18 |
| Cable | 18 |
| Safety switch..... | 18 |
| Hose | 18 |
| Pillar bracket | 19 |

Information

Please note that all versions of Mechcrane wall and pillar mounted cranes are only intended to be used in combination with **soft-starting lifting equipment**.

Non soft-starting lifting equipment can cause unwanted movements in the crane, which can interfere with the handling and affect product life.



Although the greatest care was taken regarding the information in this catalogue, we assume no responsibility for any errors. We reserve the right to make changes.

ILLUSTRATIONS – The illustrations in the catalogue represent the described products, but the delivered goods may differ in some respects from the illustrations.

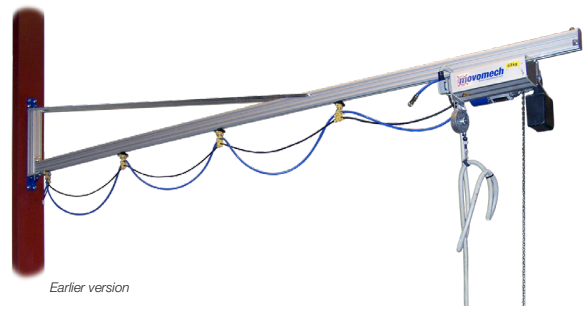
SPECIFICATIONS – The right is reserved to make changes in design and dimensions compared with the information in the catalogue in order not to prevent development of designs, material and manufacturing methods.

The customer is reminded that there is supplementary information that is not included in the catalogue regarding the suitability of different product combinations within Movomech's comprehensive product line.

All relevant information must be provided to the persons who are responsible for the application of the product.

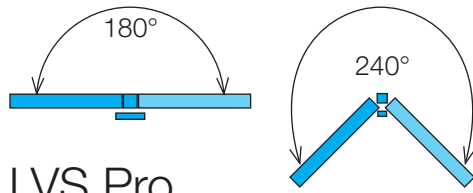
Wall mounted cranes

- Free up floor space



Earlier version

Installation
Mounting bolts must cope
3,5 kN/bolt tensile load.

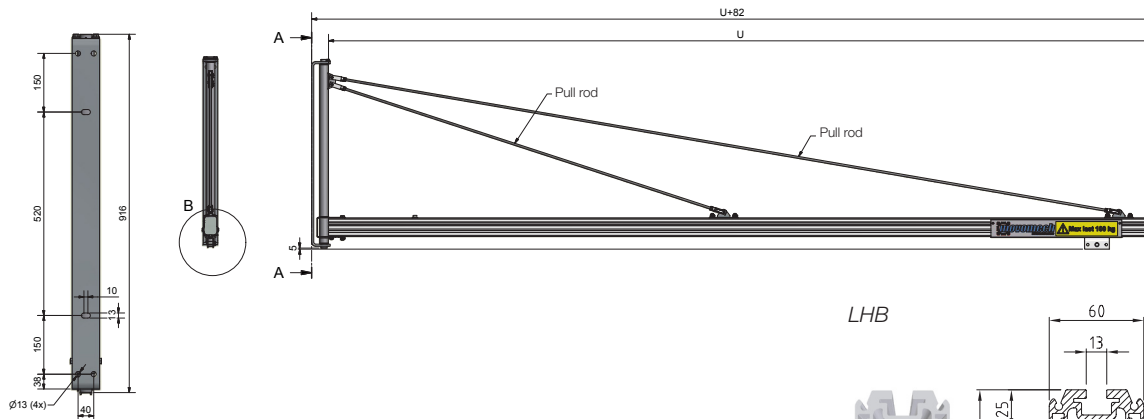


LVS Pro

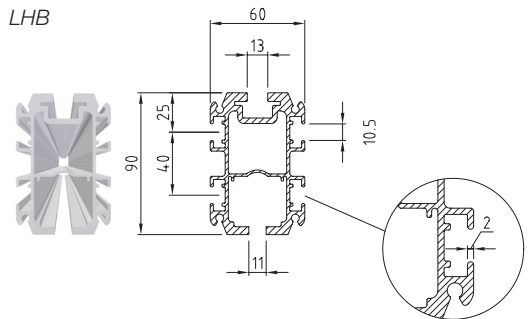
1500-6000 mm

Max load 30-110 kg

| | | | | | | | | | | |
|-------------|--------|--------|--------|--------|--------|--------|--------|--------|--------|-----------|
| Jib U mm | 2000 | 2500 | 3000 | 3500 | 4000 | 4500 | 5000 | 5500 | 6000 | 2000-6000 |
| Max load kg | 110 | 110 | 110 | 110 | 110 | 63 | 50 | 40 | 30 | 30-110 |
| # pull rods | 1 | 1 | 1 | 2 | 2 | 2 | 2 | 2 | 2 | 1-2 |
| | 741600 | 741601 | 741602 | 741603 | 741604 | 741605 | 741606 | 741607 | 741608 | 741609 |



LHB



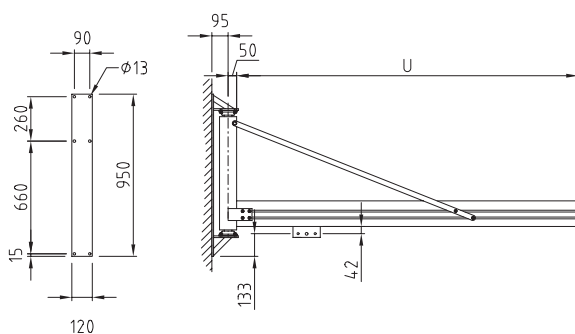
AVS1

1500-4000 mm

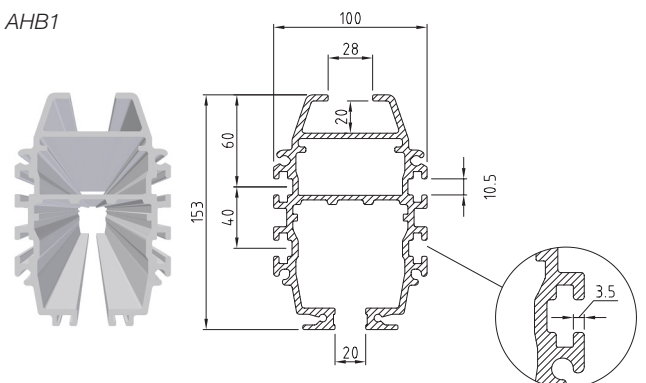
Max load 150 kg

Installation
Mounting bolts must cope
2,5 kN/bolt tensile load.

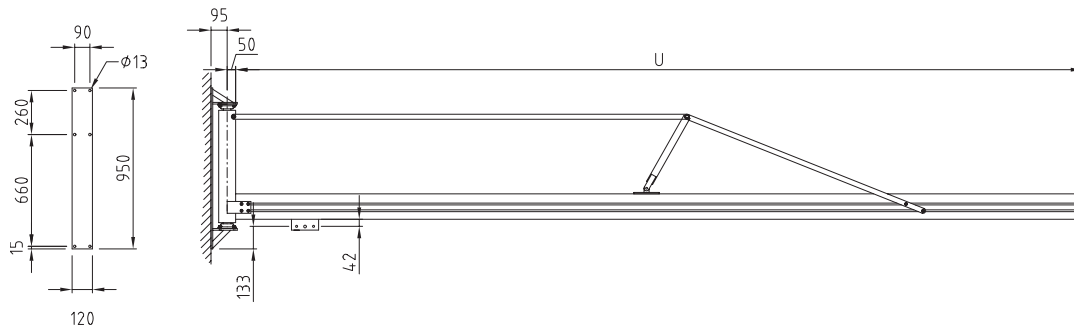
| | | | | | | | |
|----------|--------|--------|--------|--------|--------|--------|-----------|
| Jib U mm | 1500 | 2000 | 2500 | 3000 | 3500 | 4000 | 1500-4000 |
| | 735100 | 735101 | 735102 | 735103 | 735104 | 735105 | 735108 |



AHB1



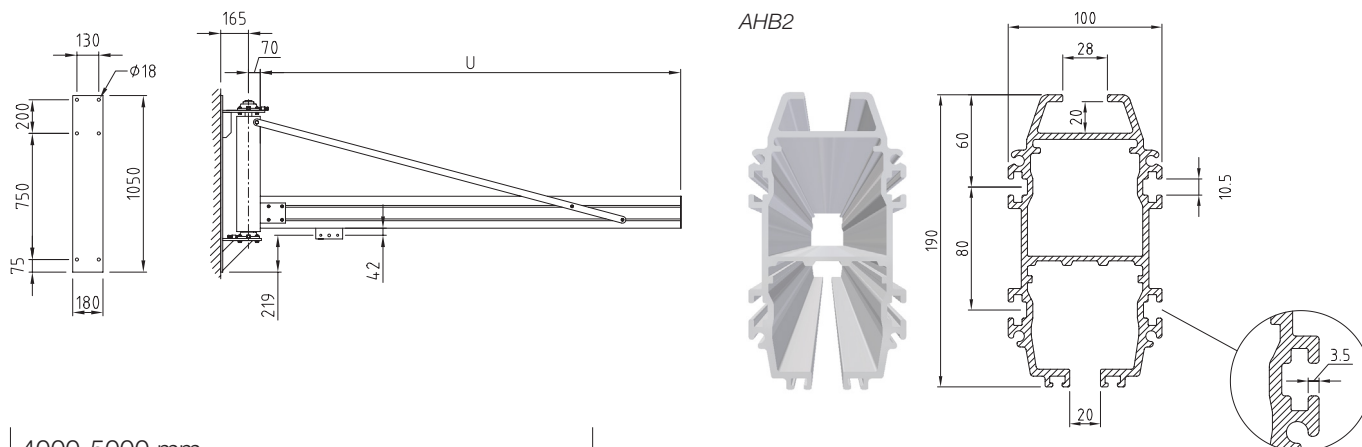
| | | |
|-----------------|--------|-----------|
| 4000-5000 mm | | |
| Max load 125 kg | | |
| Jib U mm | | |
| 4500 | 5000 | 4000-5000 |
| 735106 | 735107 | 735109 |



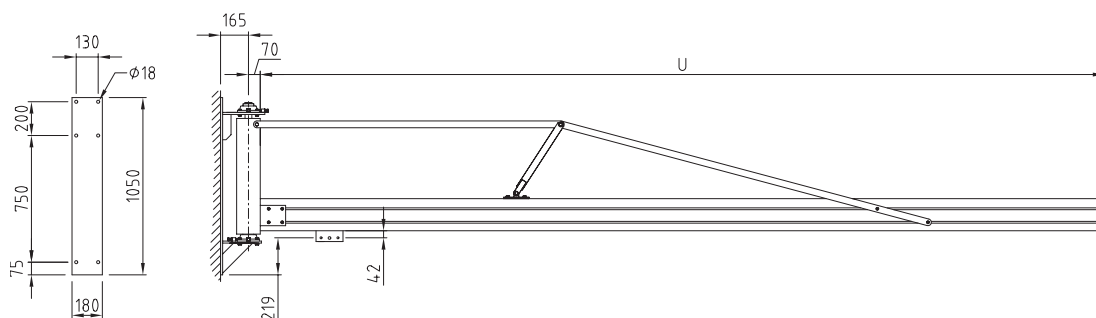
AVS2

| | | | | | | |
|-----------------|--------|--------|--------|--------|--------|-----------|
| 1500-4000 mm | | | | | | |
| Max load 250 kg | | | | | | |
| Jib U mm | | | | | | |
| 1500 | 2000 | 2500 | 3000 | 3500 | 4000 | 1500-4000 |
| 735200 | 735201 | 735202 | 735203 | 735204 | 735205 | 735208 |

Installation
Mounting bolts must cope
3,8 kN/bolt tensile load.

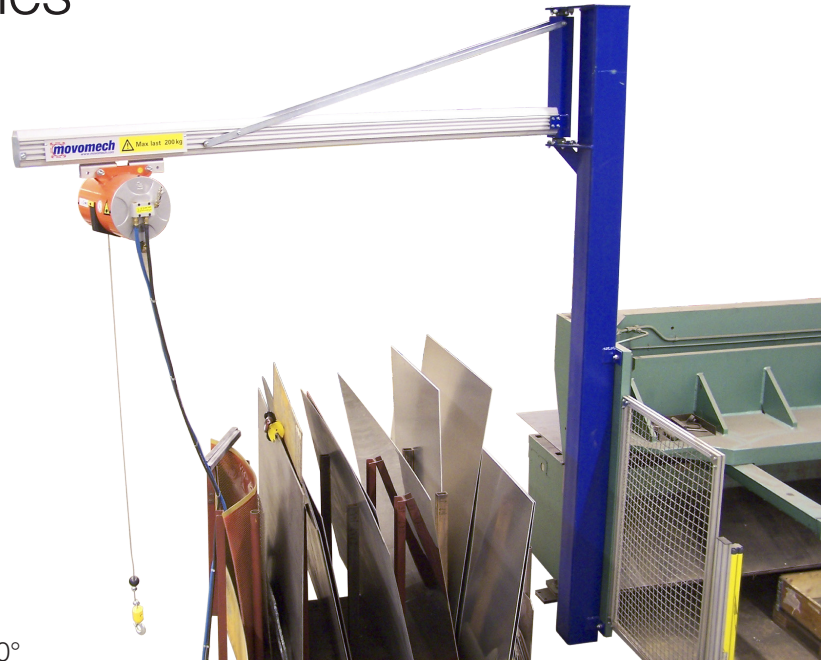
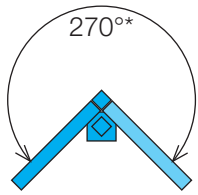


| | | |
|-----------------|--------|-----------|
| 4000-5000 mm | | |
| Max load 200 kg | | |
| Jib U mm | | |
| 4500 | 5000 | 4000-5000 |
| 735206 | 735207 | 735209 |



Floor mounted cranes

- Suitable almost everywhere



* LPS 240°

LPS Pro

1500-6000 mm

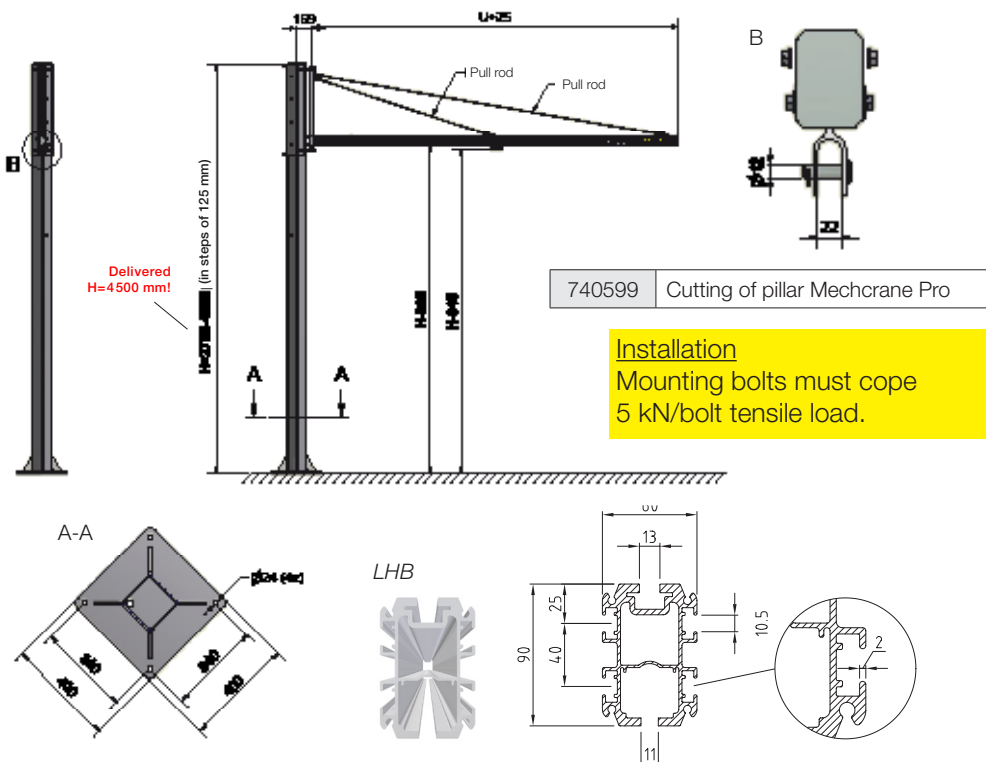
Max load 30-110 kg

| | | | | | | | | | | |
|-------------|--------|--------|--------|--------|--------|--------|--------|--------|--------|-----------|
| Jib U mm | 2000 | 2500 | 3000 | 3500 | 4000 | 4500 | 5000 | 5500 | 6000 | 2000-6000 |
| Max load kg | 110 | 110 | 110 | 110 | 110 | 63 | 50 | 40 | 30 | 30-110 |
| # pull rods | 1 | 1 | 1 | 2 | 2 | 2 | 2 | 2 | 2 | 1-2 |
| | 741510 | 741511 | 741512 | 741513 | 741514 | 741515 | 741516 | 741517 | 741518 | 741519 |

Information

Mechcrane LPS is delivered with a pillar height H=4500 mm.* The pillar can be cut in steps of 125 mm down to 2750 mm as lowest. On the pillar there is a hole pattern to attach the jib at fixed positions at distances of 125 mm.

Cutting of the pillar before delivery, can be ordered as an addition.

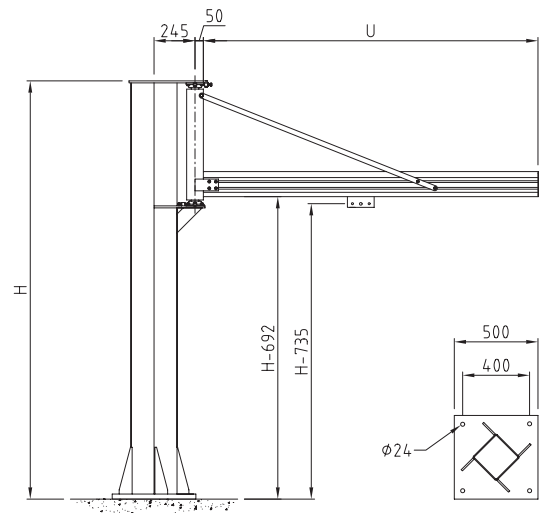


| Height | Profile (under) | Trolley |
|--------------|-----------------|-------------|
| H mm | H-905 mm | H-945 mm |
| 2750 | 1845 | 1805 |
| 2875 | 1970 | 1930 |
| 3000 | 2095 | 2055 |
| 3125 | 2220 | 2180 |
| 3250 | 2345 | 2305 |
| 3375 | 2470 | 2430 |
| 3500 | 2595 | 2555 |
| 3625 | 2720 | 2680 |
| 3750 | 2845 | 2805 |
| 3875 | 2970 | 2930 |
| 4000 | 3095 | 3055 |
| 4125 | 3220 | 3180 |
| 4250 | 3345 | 3305 |
| 4375 | 3470 | 3430 |
| 4500* | 3595 | 3555 |

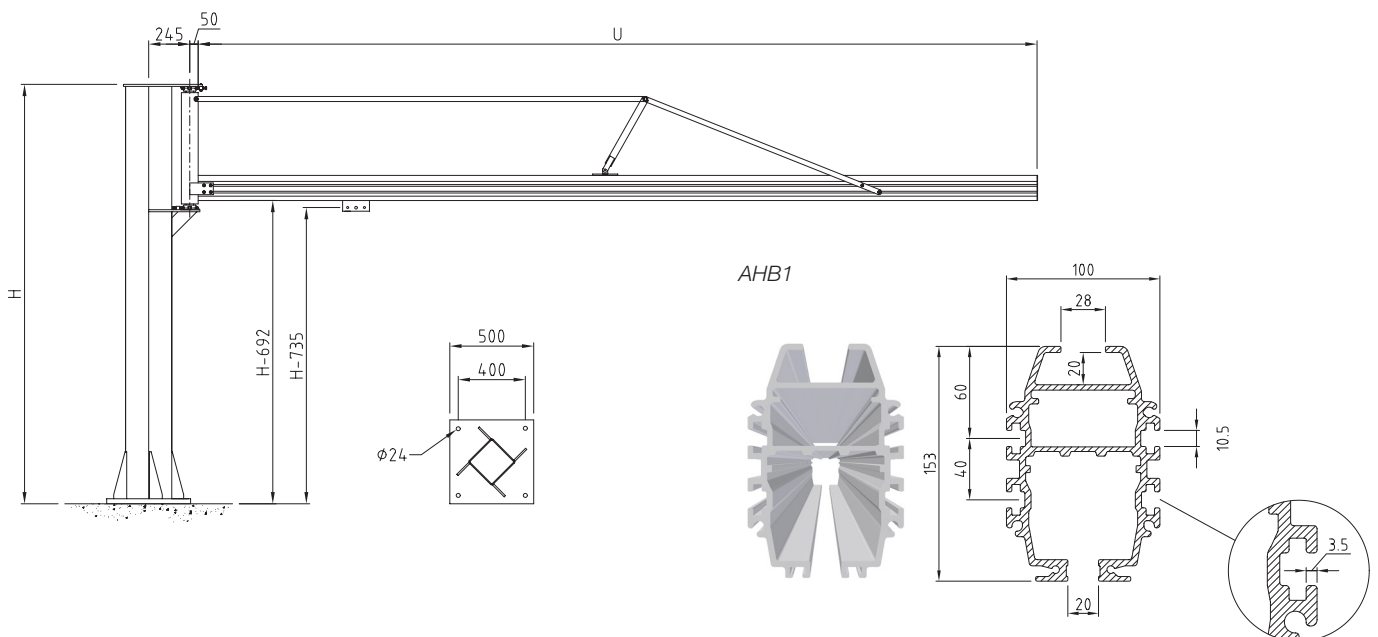
APS1

| 1500-4000 mm | | | | | | | |
|-----------------|--------|--------|--------|--------|--------|--------|-----------|
| Max load 150 kg | | | | | | | |
| Jib U mm | 1500 | 2000 | 2500 | 3000 | 3500 | 4000 | 1500-4000 |
| Height H mm | | | | | | | |
| 2750 | 735110 | 735111 | 735112 | 735113 | 735114 | 735115 | 735118 |
| 3000 | 735120 | 735121 | 735122 | 735123 | 735124 | 735125 | 735128 |
| 3250 | 735130 | 735131 | 735132 | 735133 | 735134 | 735135 | 735138 |
| 3500 | 735140 | 735141 | 735142 | 735143 | 735144 | 735145 | 735148 |
| 3750 | 735150 | 735151 | 735152 | 735153 | 735154 | 735155 | 735158 |
| 4000 | 735160 | 735161 | 735162 | 735163 | 735164 | 735165 | 735168 |
| 4250 | 735170 | 735171 | 735172 | 735173 | 735174 | 735175 | 735178 |
| 4500 | 735180 | 735181 | 735182 | 735183 | 735184 | 735185 | 735188 |
| <4500 | 735190 | 735191 | 735192 | 735193 | 735194 | 735195 | 735198 |

| 4000-5000 mm | | | |
|-----------------|--------|--------|-----------|
| Max load 125 kg | | | |
| Jib U mm | 4500 | 5000 | 4000-5000 |
| Height H mm | | | |
| 2750 | 735116 | 735117 | 735119 |
| 3000 | 735126 | 735127 | 735129 |
| 3250 | 735136 | 735137 | 735139 |
| 3500 | 735146 | 735147 | 735149 |
| 3750 | 735156 | 735157 | 735159 |
| 4000 | 735166 | 735167 | 735169 |
| 4250 | 735176 | 735177 | 735179 |
| 4500 | 735186 | 735187 | 735189 |
| <4500 | 735196 | 735197 | 735199 |



Installation
 Mounting bolts must cope
 8.5 kN/bolt tensile load.



APS2

1500-4000 mm

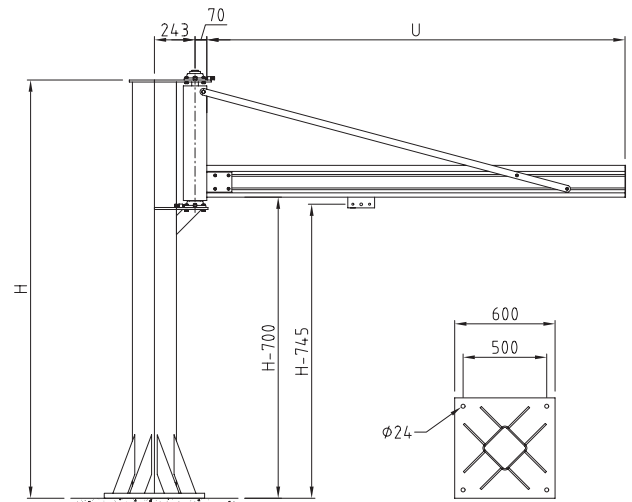
Max load 250 kg

| Jib U mm | 1500 | 2000 | 2500 | 3000 | 3500 | 4000 | 1500-4000 |
|-------------|--------|--------|--------|--------|--------|--------|-----------|
| Height H mm | | | | | | | |
| 2750 | 735210 | 735211 | 735212 | 735213 | 735214 | 735215 | 735218 |
| 3000 | 735220 | 735221 | 735222 | 735223 | 735224 | 735225 | 735228 |
| 3250 | 735230 | 735231 | 735232 | 735233 | 735234 | 735235 | 735238 |
| 3500 | 735240 | 735241 | 735242 | 735243 | 735244 | 735245 | 735248 |
| 3750 | 735250 | 735251 | 735252 | 735253 | 735254 | 735255 | 735258 |
| 4000 | 735260 | 735261 | 735262 | 735263 | 735264 | 735265 | 735268 |
| 4250 | 735270 | 735271 | 735272 | 735273 | 735274 | 735275 | 735278 |
| 4500 | 735280 | 735281 | 735282 | 735283 | 735284 | 735285 | 735288 |
| <4500 | 735290 | 735291 | 735292 | 735293 | 735294 | 735295 | 735298 |

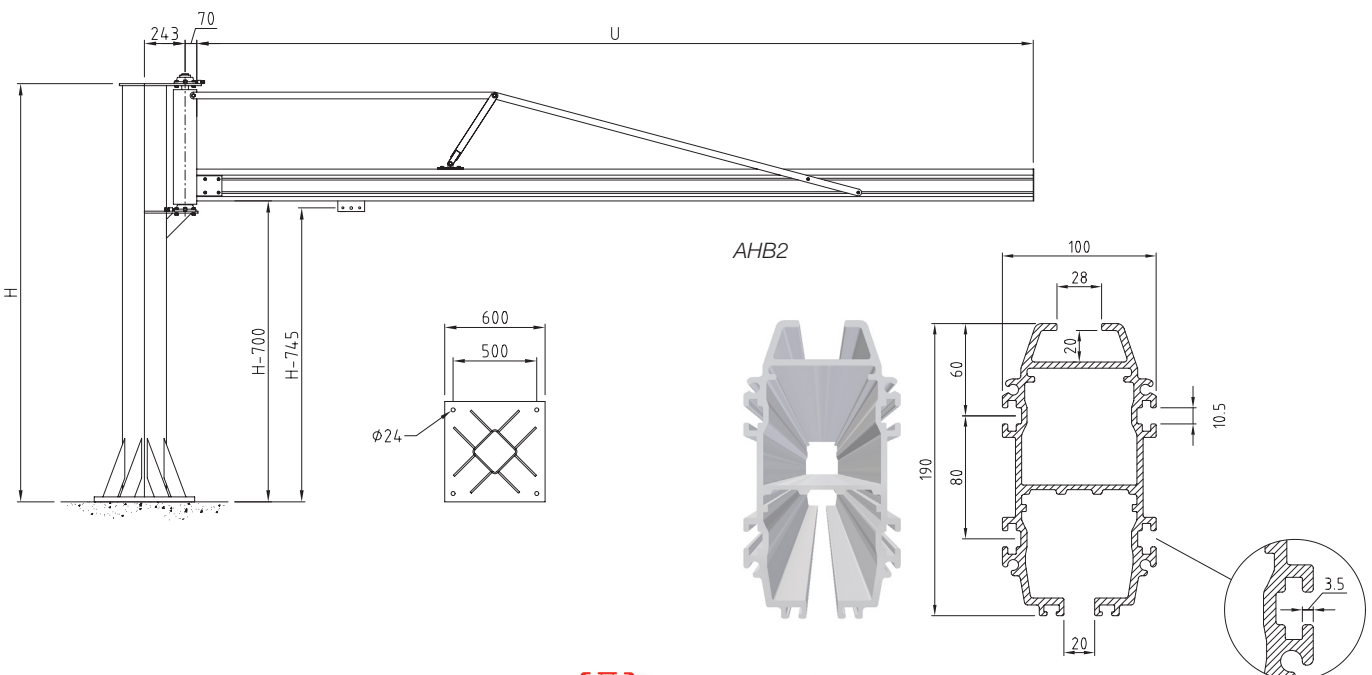
4000-5000 mm

Max load 200 kg

| Jib U mm | 4500 | 5000 | 4000-5000 |
|-------------|--------|--------|-----------|
| Height H mm | | | |
| 2750 | 735216 | 735217 | 735219 |
| 3000 | 735226 | 735227 | 735229 |
| 3250 | 735236 | 735237 | 735239 |
| 3500 | 735246 | 735247 | 735249 |
| 3750 | 735256 | 735257 | 735259 |
| 4000 | 735266 | 735267 | 735269 |
| 4250 | 735276 | 735277 | 735279 |
| 4500 | 735286 | 735287 | 735289 |
| <4500 | 735296 | 735297 | 735299 |

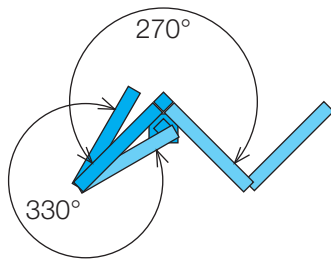


Installation
Mounting bolts must cope 12 kN/bolt tensile load.



Knuckle boom cranes

- Floor mounted knuckle boom crane
- Suitable almost everywhere

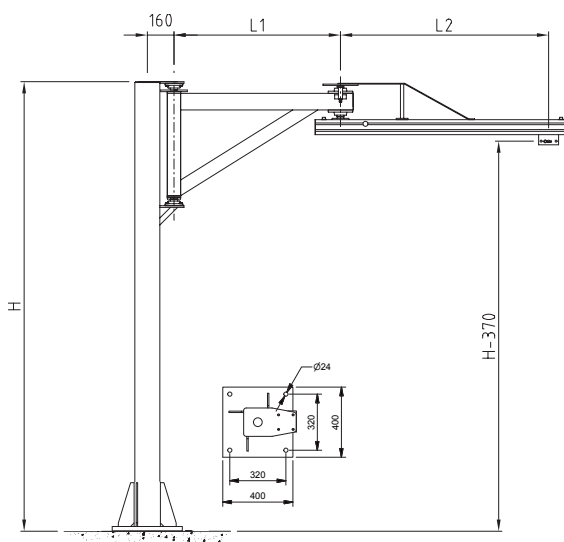


VKL

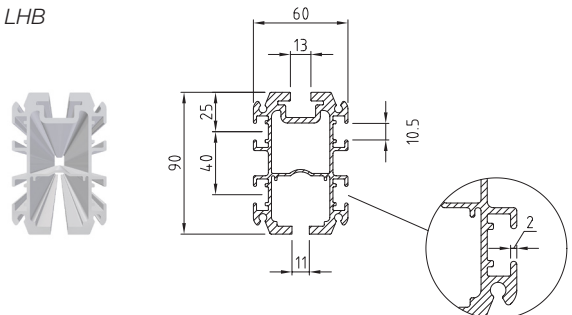
| H mm | |
|------|--------|
| 2500 | 743135 |
| 2750 | 743136 |
| 3000 | 743137 |
| 3250 | 743138 |
| 3500 | 743139 |
| 3750 | 743140 |

| L1 mm | |
|-------|--------|
| 1000 | 736520 |
| 1250 | 736521 |
| 1500 | 736522 |
| 1750 | 736523 |

| L2 mm | | ! |
|-------|--------|-------|
| 1250 | 737175 | 80 kg |
| 1500 | 737176 | 63 kg |
| 1750 | 737177 | 50 kg |



LHB



Installation

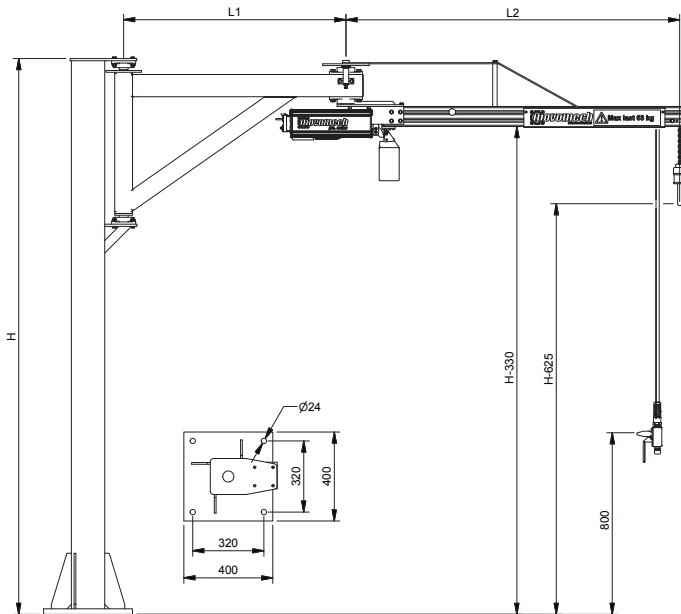
Mounting bolts must cope 4,2 kN/bolt tensile load.

VKL-H

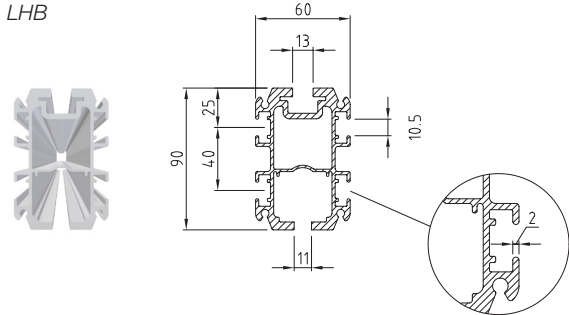
| H mm | |
|------|--------|
| 2500 | 743135 |
| 2750 | 743136 |
| 3000 | 743137 |
| 3250 | 743138 |
| 3500 | 743139 |
| 3750 | 743140 |

| L1 mm | |
|-------|--------|
| 1000 | 736520 |
| 1250 | 736521 |
| 1500 | 736522 |
| 1750 | 736523 |

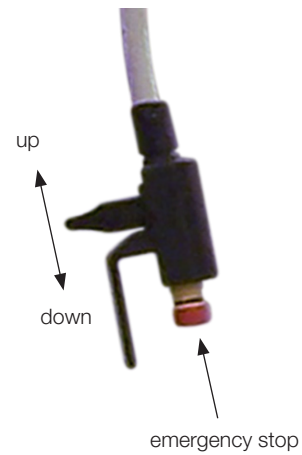
| L2 mm | | ! |
|-------|--------|-------|
| 1250 | 742884 | 80 kg |
| 1500 | 742885 | 63 kg |
| 1750 | 742886 | 50 kg |



LHB



Operating



Installation
Mounting bolts must cope 4,2 kN/bolt tensile load.

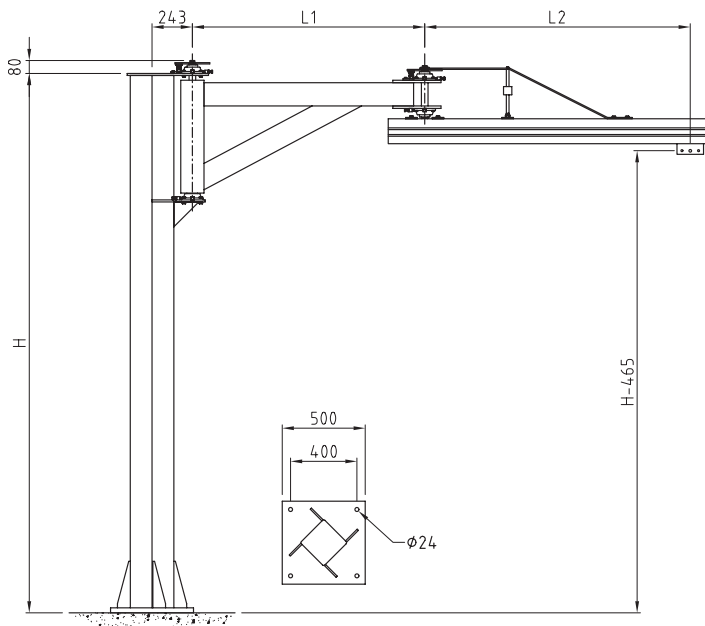
| | | |
|-----------------------|--------|-----------------------------|
| Load capacity | kg | 50/63/80 |
| Length of stroke (SL) | mm | 4000 |
| Hoisting speed | m/min | 0-16 |
| Chain | mm | 4*12 |
| Maximum tare weight | kg | 200 |
| Motor output | kW | 0,22 |
| Voltage | V | 1x230 N, PE (±15%) 50/60 Hz |
| Fuse | AT | 10 |
| Enclosure class | IP | 54 |
| Noise level | dB (A) | <70 |

VKA 125

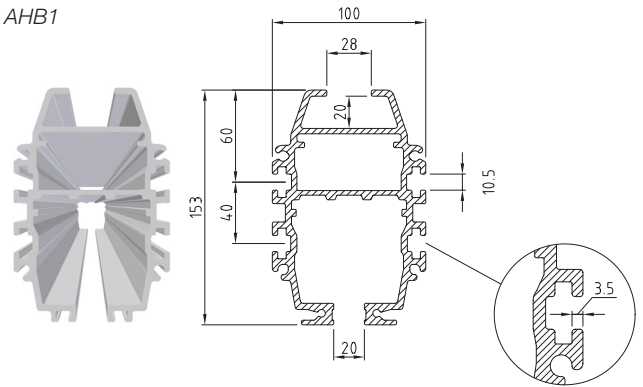
| H mm | |
|------|--------|
| 2750 | 737144 |
| 3000 | 737145 |
| 3250 | 737146 |
| 3500 | 737147 |
| 3750 | 737148 |
| 4000 | 737149 |

| L1 mm | |
|-------|--------|
| 1200 | 737130 |
| 1400 | 737131 |
| 1650 | 737132 |
| 1900 | 737133 |

| L2 mm | |
|-------|--------|
| 1300 | 737190 |
| 1600 | 737191 |
| 1850 | 737192 |
| 2100 | 737193 |



AHB1



Installation

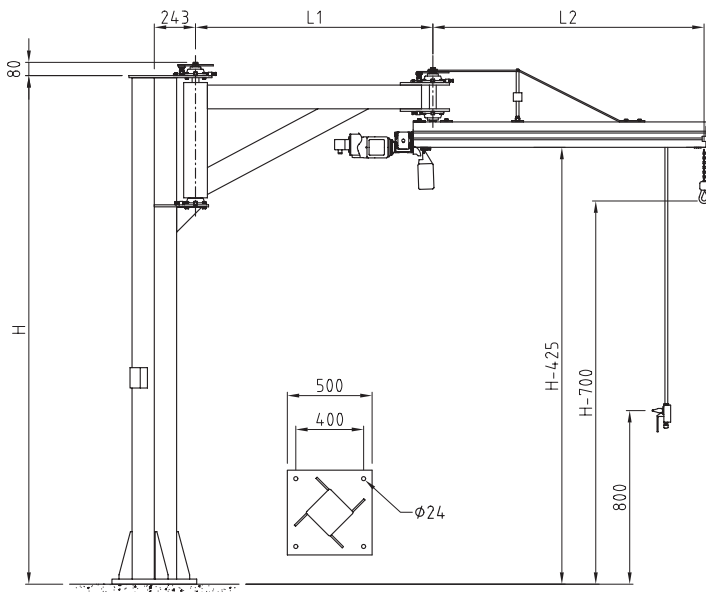
Mounting bolts must cope
7,5 kN/bolt tensile load.

VKA-H 125

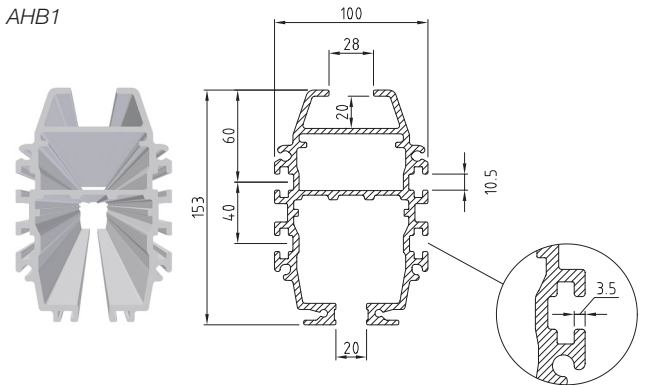
| H mm | |
|------|--------|
| 2750 | 737144 |
| 3000 | 737145 |
| 3250 | 737146 |
| 3500 | 737147 |
| 3750 | 737148 |
| 4000 | 737149 |

| L1 mm | |
|-------|--------|
| 1200 | 737130 |
| 1400 | 737131 |
| 1650 | 737132 |
| 1900 | 737133 |

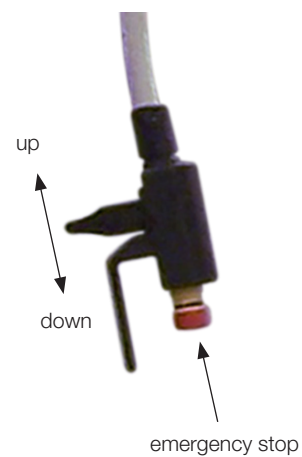
| L2 mm | |
|-------|--------|
| 1300 | 742887 |
| 1600 | 742888 |
| 1850 | 742889 |
| 2100 | 742890 |



AHB1



Operating



Installation
Mounting bolts must cope 7,5 kN/bolt tensile load.

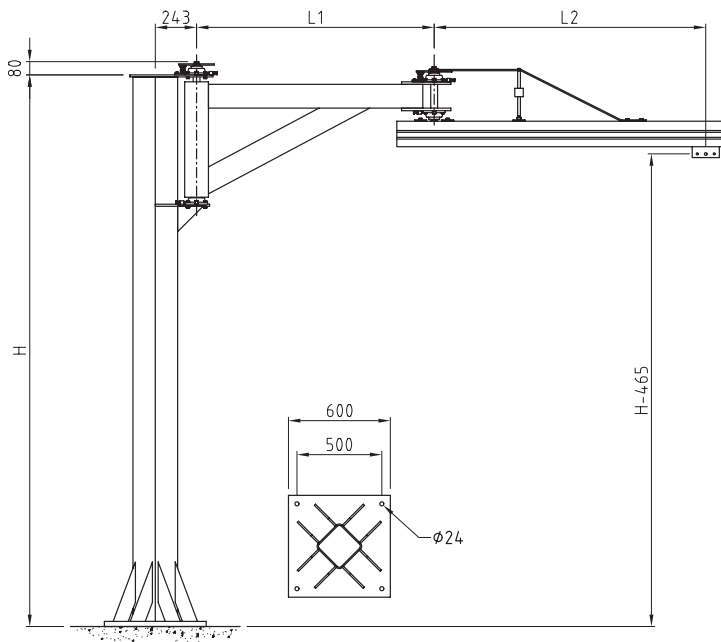
| | | |
|-----------------------|--------|-----------------------------|
| Load capacity | kg | 125 |
| Length of stroke (SL) | mm | 4000 |
| Hoisting speed | m/min | 0-12 |
| Chain | mm | 4*12 |
| Maximum tare weight | kg | 275 |
| Motor output | kW | 0,22 |
| Voltage | V | 1x230 N, PE (±15%) 50/60 Hz |
| Fuse | AT | 10 |
| Enclosure class | IP | 54 |
| Noise level | dB (A) | <70 |

VKA 200

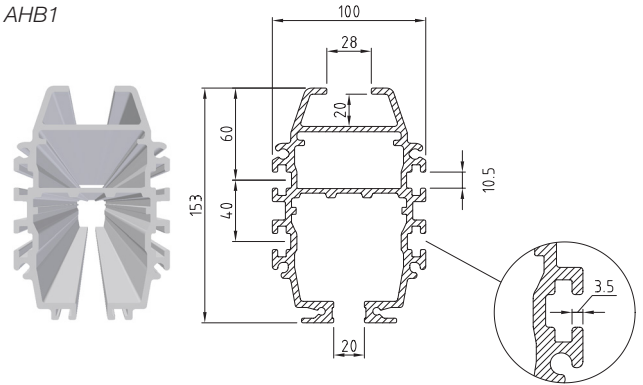
| H mm | |
|------|--------|
| 2750 | 734231 |
| 3000 | 734232 |
| 3250 | 734233 |
| 3500 | 734234 |
| 3750 | 734235 |
| 4000 | 734236 |

| L1 mm | |
|-------|--------|
| 1200 | 737130 |
| 1400 | 737131 |
| 1650 | 737132 |
| 1900 | 737133 |

| L2 mm | |
|-------|--------|
| 1300 | 737140 |
| 1600 | 737141 |
| 1850 | 737142 |
| 2100 | 737143 |



AHB1



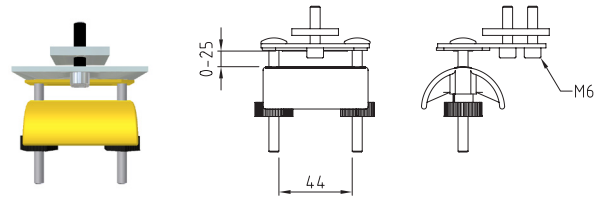
Installation
 Mounting bolts must cope
 10 kN/bolt tensile load.

Optional products

End fix

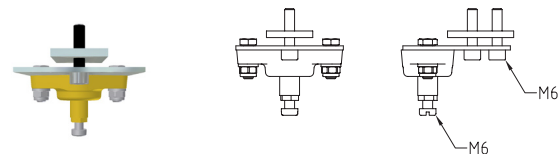
A Saddle

| Article | Rail | Capacity kg | Weight kg |
|---------|---------|----------------|--------------|
| 730485 | PHB-LHB | 10 | 0,2 |
| 730488 | AHB | 10 | 0,2 |



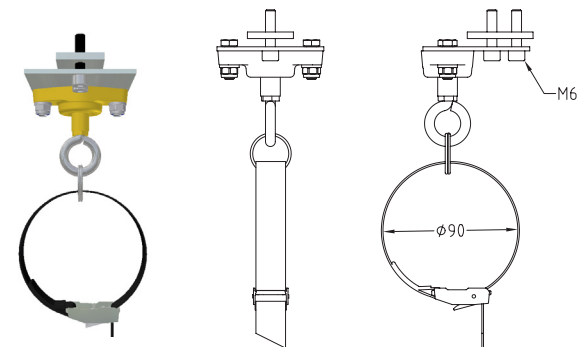
B* Ball joint

| Article | Rail | Capacity kg | Weight kg |
|---------|---------|----------------|--------------|
| 730491 | PHB-LHB | 10 | 0,15 |
| 730492 | AHB | 10 | 0,15 |



C Strap

| Article | Rail | Capacity kg | Weight kg |
|---------|---------|----------------|--------------|
| 730494 | PHB-LHB | 10 | 0,2 |
| 730496 | AHB | 10 | 0,2 |

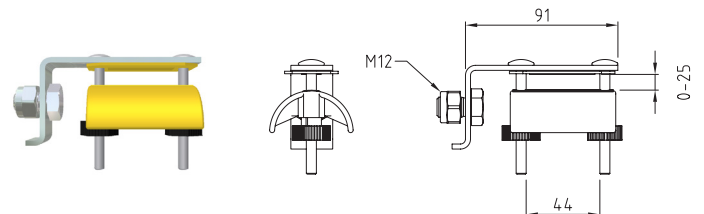


Max. 10 kg

Cable towing arms

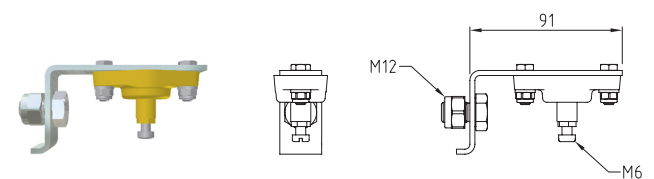
A Saddle

| Article | Rail | Capacity kg | Weight kg |
|---------|-------------|----------------|--------------|
| 730482 | PHB-LHB-AHB | 10 | 0,2 |



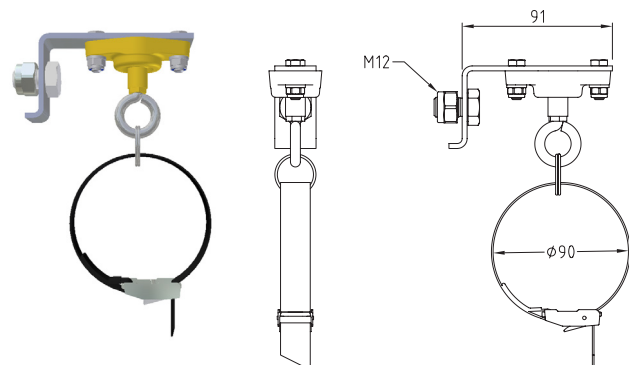
B* Ball joint

| Article | Rail | Capacity kg | Weight kg |
|---------|-------------|----------------|--------------|
| 730493 | PHB-LHB-AHB | 10 | 0,15 |

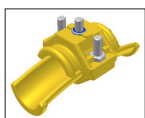


C Strap

| Article | Rail | Capacity kg | Weight kg |
|---------|-------------|----------------|--------------|
| 730495 | PHB-LHB-AHB | 10 | 0,2 |



Max. 10 kg

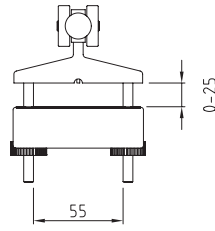


* Combine with cable/hose clamp, section *Cable & hose clamps*.

Cable trolleys

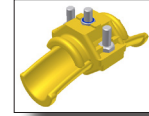
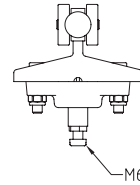
A Saddle

| Article | Rail | Weight kg |
|---------|---------|--------------|
| 730467 | PHB-LHB | 0,15 |
| 730470 | AHB | 0,15 |



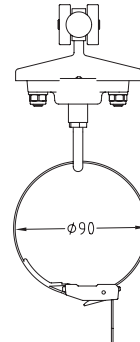
B* Ball joint

| Article | Rail | Weight kg |
|---------|---------|--------------|
| 730469 | PHB-LHB | 0,15 |
| 730472 | AHB | 0,15 |



C Strap

| Article | Rail | Weight kg |
|---------|---------|--------------|
| 730497 | PHB-LHB | 0,15 |
| 730498 | AHB | |



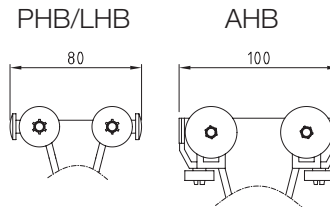
* Combine with cable/hose clamp, section *Cable & hose clamps*.

INFORMATION

Cable trolleys for LHB also fits C-rails 30x32.
Should be combined with supplementary travel limits to avoid damage to the cable trolleys.

Recommended cable trolleys

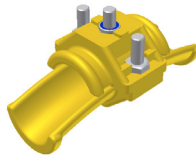
| U mm | Quantity |
|-----------|----------|
| 1500-2500 | 1 |
| 3000-3500 | 2 |
| 4000-4500 | 3 |
| 5000 | 4 |



Max. 10 kg

Cable & hose clamps

| Article | ø | Weight kg |
|---------|-------|--------------|
| 730473 | 10-16 | 0,05 |
| 730474 | 17-25 | 0,06 |
| 730475 | 26-36 | 0,1 |



Combine with end fix, strain relief or cable trolley with ball joint, review respective section.

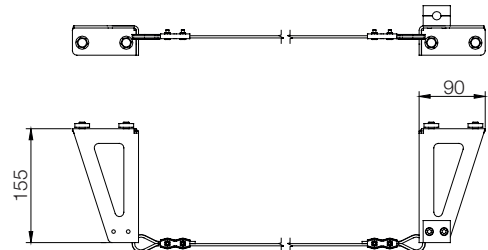
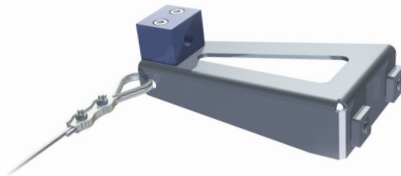
INFORMATION

When using different sizes of type A, place the largest one next to the trolley.

Max. 10 kg

Wire brackets

| Article | Weight kg |
|---------|--------------|
| 740520 | 0.9 |



INFORMATION

NOTE: Sold in pairs, incl. thimble and lock. Wire is ordered separately.

Wire

| Article | ø |
|---------|---|
| 730693 | 3 |



Ring

| Article |
|---------|
| 733846 |



Strip

| Article |
|---------|
| 730853 |



Clamp

| Article |
|---------|
| 731556 |



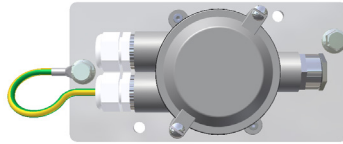
Strain relief

| Article |
|-----------|
| 739976 ** |

* For cable or hose/cable combinations.
** For spiral hose.

Coupling units

| Article | Type | Weight kg |
|---------|------|--------------|
| 730522 | A | 0,6 |
| 730524 | C | 0,6 |



IP67

INFORMATION

A: For the round cable/flat cable combination, including earthing cable
 C: For the round cable/round cable combination, including earthing cable

NOTE: Electrical installation may be performed only under the supervision of a qualified electrician!

Safety switch

| Article |
|---------|
| 731530 |



INFORMATION

Lockable.
 Mounting screws and cable fitting are not included.

NOTE: Electrical installation may be performed only under the supervision of a qualified electrician!

Cable

Round

| Article | Type | ø mm |
|---------|-------|---------|
| 730650 | 3G1,5 | 10 |
| 730652 | 5G1,5 | 11 |

Flat

| Article | Type | mm |
|---------|-------|------|
| 730648 | 4G1,4 | 15*5 |
| 730649 | 5G1,5 | 18*5 |

Hose

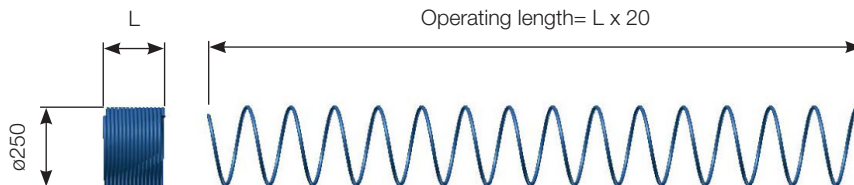
| Article | ø mm |
|---------|---------|
| 730646 | 15,5*10 |

INFORMATION

Cable and hoses are ordered per running meter, spiral hose is ordered per operating length.

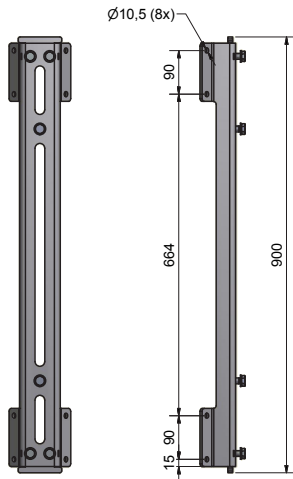
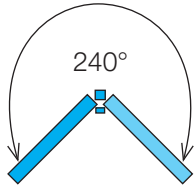
Spiral

| Article | ø mm |
|---------|---------|
| 730647 | 12*10 |



Pillar bracket

| |
|---------|
| Article |
| 741597 |



INFORMATION

Fits LVS crane.
For installation on existing pillar or wall corner.

Mounting screws are not included.

Installation

Mounting bolts must cope
3,5 kN/bolt tensile load.

Movomech AB

Kabelvägen 9
SE-291 62 Kristianstad
SWEDEN

Phone +46 44 282 900
Fax +46 44 282 928
E-mail info@movomech.se
Web www.movomech.com

